

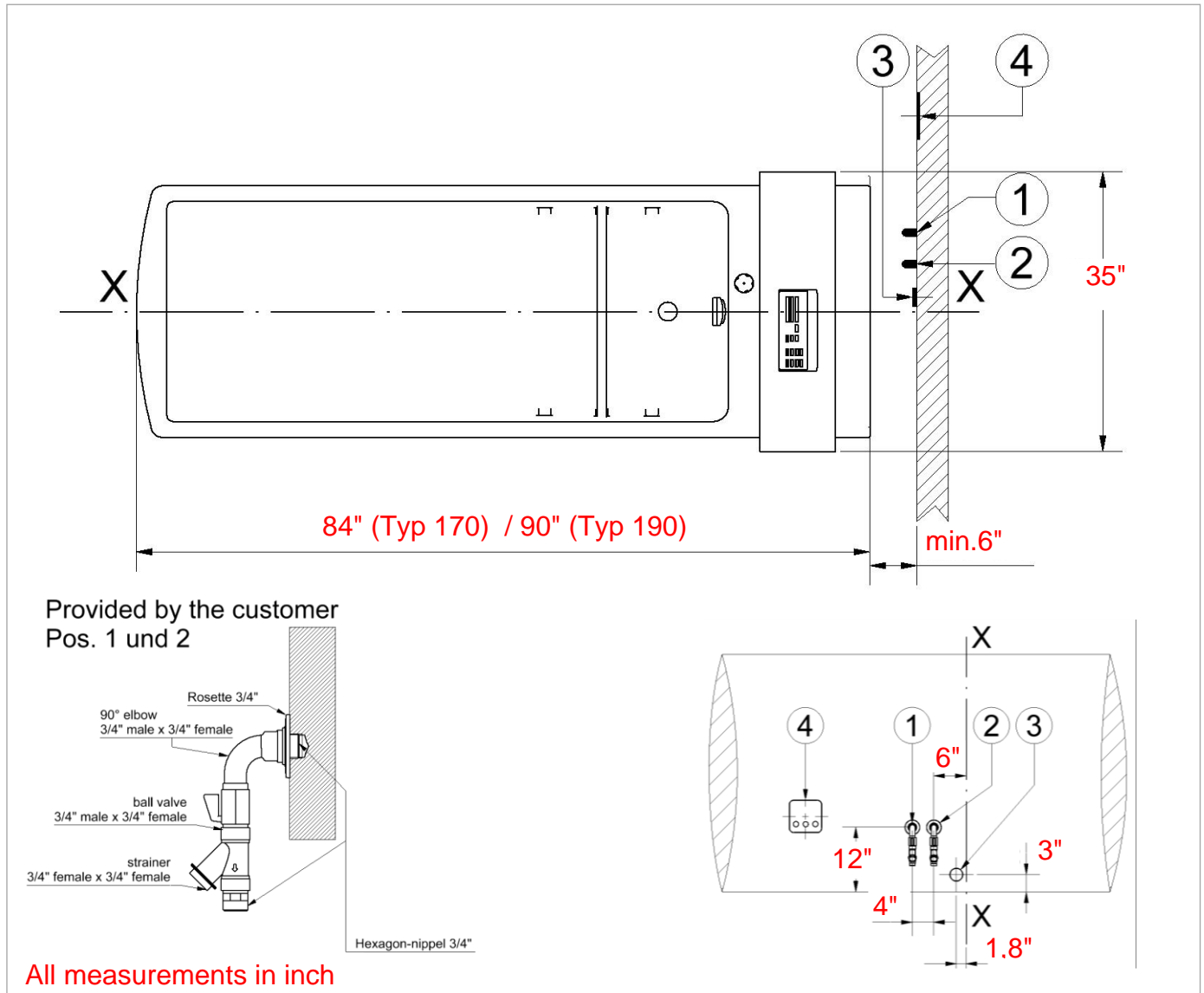
# INSTALLATION PLAN

## AVERO Phoenix

Article number: 910130000 (Typ 170)

Article number: 910131000 (Typ 190)

1. Version 01/15 ac



### ➔ Pre-set safety measures!

Close valves for cold and warm water.  
Please comply with local rules and regulations for electrical systems in wet and humid rooms.

### ➔ Pre-installed connections - Sanitary - Electric

- ① Warm-water connection  $\frac{3}{4}$  ", set female threading tile-even. Assemble hexagon-nipple, elbow 90°, ball valve, strainer and rosette (see details illustration Pos.1 und 2).
- ② Cold-water connection  $\frac{3}{4}$  ", set female threading tile-even. Assemble hexagon-nipple, elbow 90°, ball valve, strainer and rosette (Details illustration Pos.1 und 2).
- ③ Wall drain DN 50, tile-even.
- ④ Junction-box (min. IP X5), 230 V/50 Hz, 1, 5 mm<sup>2</sup>, fuse protection 16 A. Position according to local codes and standards.

This drawing is the property of BEKA Hospitec GmbH. The complete content and drawing fall under the safety of the copyright and competition protection. Users are allowed the use of this content only for the from BEKA Hospitec intended purposes. Every copy, reproduction, distribution on third parties, in part or in whole is only allowed with the written approval of BEKA Hospitec GmbH. All content is subject to technical changes and improvements.